

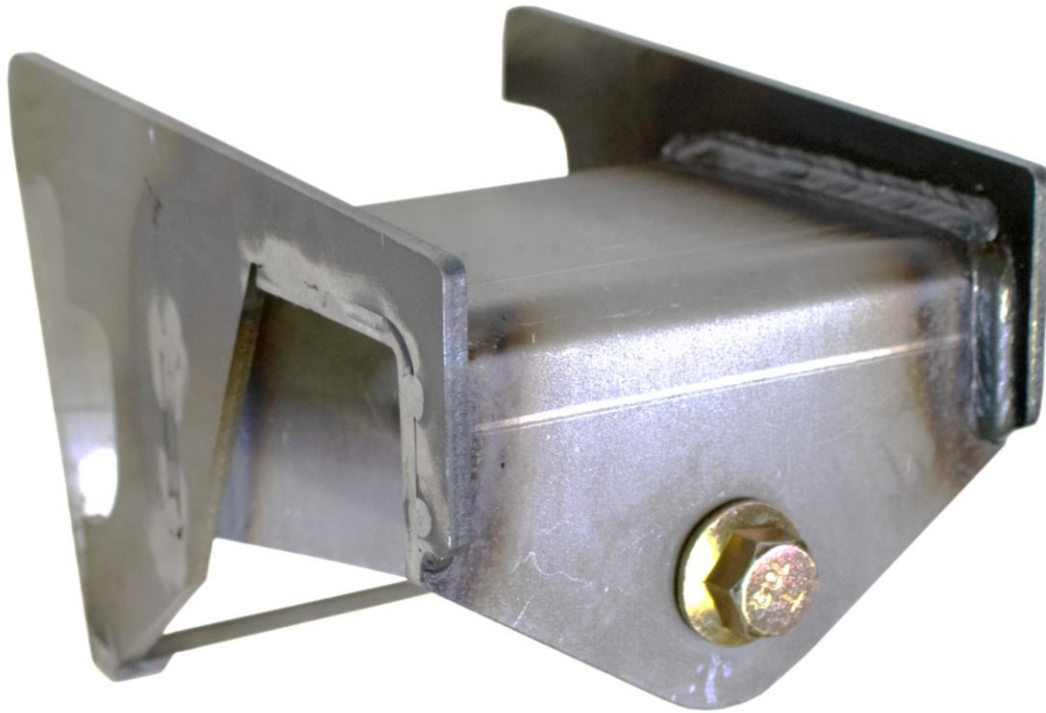


RUST BUSTER

RB7721 Rear Leaf Spring Mount 2002-2008 Dodge Ram 1500



VIDEO AVAILABLE



REQUIRED TOOLS

Jack Stands or Lift
Mig Welder
Paint/Primer
Hand Grinder
Cutting Wheel or Torch
Welding Gloves
Welding Hood/Shield
Ear & Eye Protection
Sockets & Wrench
Fire Extinguisher

KIT CONTAINS

Rear Leaf Spring Mount
Frame Plate
M14 Flanged Nylon-Insert Locknut
M14 Flanged Hex Head Screw
(Partially Threaded)

QTY

1
1
1
1



RUST BUSTER

RB7721 Rear Leaf Spring Mount 2002-2008 Dodge Ram 1500

1) PREPARING YOUR VEHICLE

Begin by disconnecting your battery prior to starting your installation.

Inspect your vehicle for leaking fuel lines, fuel tank and engine components. If you have fuel leaks repair all leaks prior to starting your installation. If your fuel tank is near your welding area **remove your tank prior to welding.**

Remove all combustible items above the work area such as seats, carpets, padding, etc.

Keep all flammable materials away from the vehicle work area.

2) PREPARING YOUR WORKSTATION

Keep a fire extinguisher close by in the case of fire and make sure you always have a designated "Fire Watch" to assist during the cutting or welding phases.

Abide by all apprenticed welding safety standards and practices.

Always use appropriate welding eye protection, ear protection, and work and fire safety gloves during the installation and within the work area.



WARNING!

If you are unsure on how to perform the installation or how to operate any of the required tools listed above, it is **HIGHLY** advised that you enlist the work of a certified welder/installer.

Failure to follow proper safety precautions and instructions may result in serious injury. **The user assumes all liability when installing the product.**



RUST BUSTER

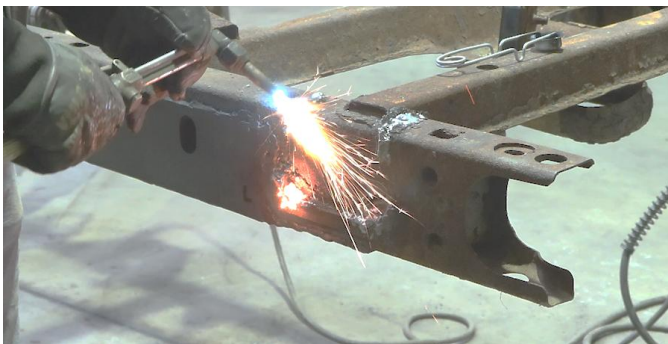
RB7721 Rear Leaf Spring Mount 2002-2008 Dodge Ram 1500

3) PREPARING FOR YOUR INSTALL

Lift or remove your bed. Remove rear leaf springs mounts bolt and push your leaf spring out of the way.

4) CUT

Cut off the factory rear leaf spring mount and any obstructions in the work area.



Grind the frame free of rust and debris, revealing bare metal.



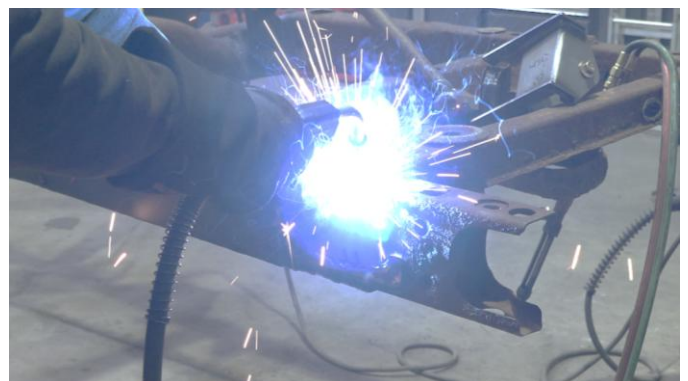
Spray the work area with a weld through primer to help prevent the risk of rust development.

5) WELD

Take your replacement rear leaf spring hanger and hold it up to the frame using the factory mounts silhouette to help with the alignment. We've included a plate you can use over the frame rail, as there's usually a substantial amount of rot behind the factory hanger.



Following proper welding procedures, tac weld your frame plate onto the frame.





RUST BUSTER

RB7721 Rear Leaf Spring Mount 2002-2008 Dodge Ram 1500

Then take your replacement rear leaf spring mount and hold it up to the frame lining up the mount's hooks with the top of your frame.



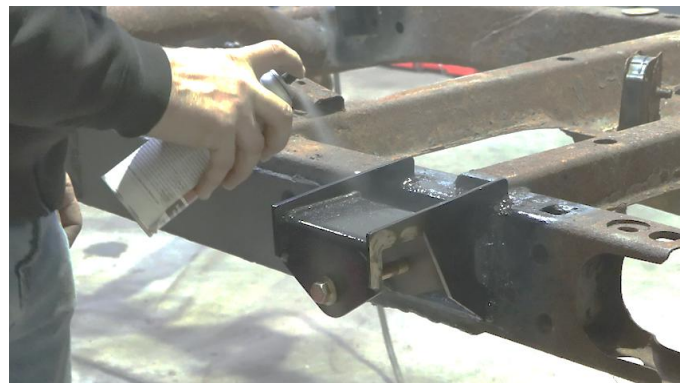
Then, tack weld it into the frame before welding it on fully. Weld 100% around all edges.



6) **PAINT**

Paint the part with primer or other rust inhibitor to help prevent or reduce the risk of rust formation.

We recommend our Rust Buster Rust Converter & Primer Spray Paint (RB9917).



7) **REINSTALL**

Reinstall your leaf spring and bed.