



RUST BUSTER

RB7708
Club Cab Front Bed Mount
1997-2004 Dodge Dakota – 4WD – 6.5ft Bed



REQUIRED TOOLS

Jack Stands or Lift
Mig Welder
Paint/Primer
Hand Grinde
Cutting Wheel or Torch
Welding Gloves
Welding Hood/Shield
Ear & Eye Protection
Fire Extinguisher
C-Clamp

KIT CONTAINS

Front Bed Mount

QTY

1



RUST BUSTER

RB7708

Club Cab Front Bed Mount

1997-2004 Dodge Dakota – 4WD – 6.5ft Bed

1) **PREPARING YOUR VEHICLE**

Begin by disconnecting your battery prior to starting your installation.

Inspect your vehicle for leaking fuel lines, fuel tank and engine components. If you have fuel leaks repair all leaks prior to starting your installation. If your fuel tank is near your welding area **remove your tank prior to welding.**

Remove all combustible items above the work area such as seats, carpets, padding, etc.

Keep all flammable materials away from the vehicle work area.

2) **PREPARING YOUR WORKSTATION**

Keep a fire extinguisher close by in the case of fire and make sure you always have a designated “Fire Watch” to assist during the cutting or welding phases.

Abide by all apprenticed welding safety standards and practices.

Always use appropriate welding eye protection, ear protection, and work and fire safety gloves during the installation and within the work area.



WARNING!

If you are unsure on how to perform the installation or how to operate any of the required tools listed above, it is **HIGHLY** advised that you enlist the work of a certified welder/installer.

Failure to follow proper safety precautions and instructions may result in serious injury. **The user assumes all liability when installing the product.**



RUST BUSTER

RB7708

Club Cab Front Bed Mount

1997-2004 Dodge Dakota – 4WD – 6.5ft Bed

3) **PREPARING FOR YOUR INSTALL**

Move any liners, lines, and power harnesses from the work area. (We recommend removing your bed to help with welding angles)

Uninstall the factory bed mount bolt.



Grind the work area free of rust and debris, revealing bare metal/ followed by coating the work area with a weld through primer to help prevent against further rust development.



Coat the work area in a weldable primer to help prevent against further rust development.



4) **CUT**

Begin by removing the factory bed mount.





RUST BUSTER

RB7708

Club Cab Front Bed Mount

1997-2004 Dodge Dakota – 4WD – 6.5ft Bed

(Optional) Hold the mount up to the frame and reinstall your factory bolt to obtain proper alignment and mark off the install location, or tac weld it in place. Confirm the mount's alignment, and uninstall the bolt before fully welding into place.



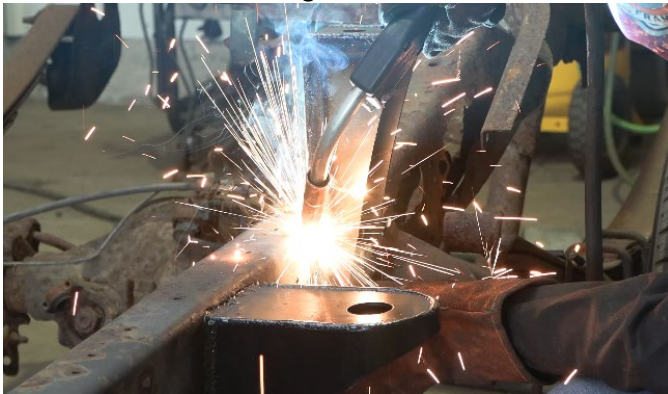
We recommend our Rust Buster Rust Converter & Primer Spray Paint (RB9917).



Reinstall liners, lines, and power harnesses.

5) **WELD**

Remove any potential fire hazards from the work area. Following proper welding procedures, tac weld the part onto the frame before welding it on fully. Weld 100% around all edges.



6) **PAINT AND PROTECT**

Reinstall your bed mount bolt.

Coat the part and work area with a primer or other rust inhibitor to help prevent or reduce the risk of rust formation.