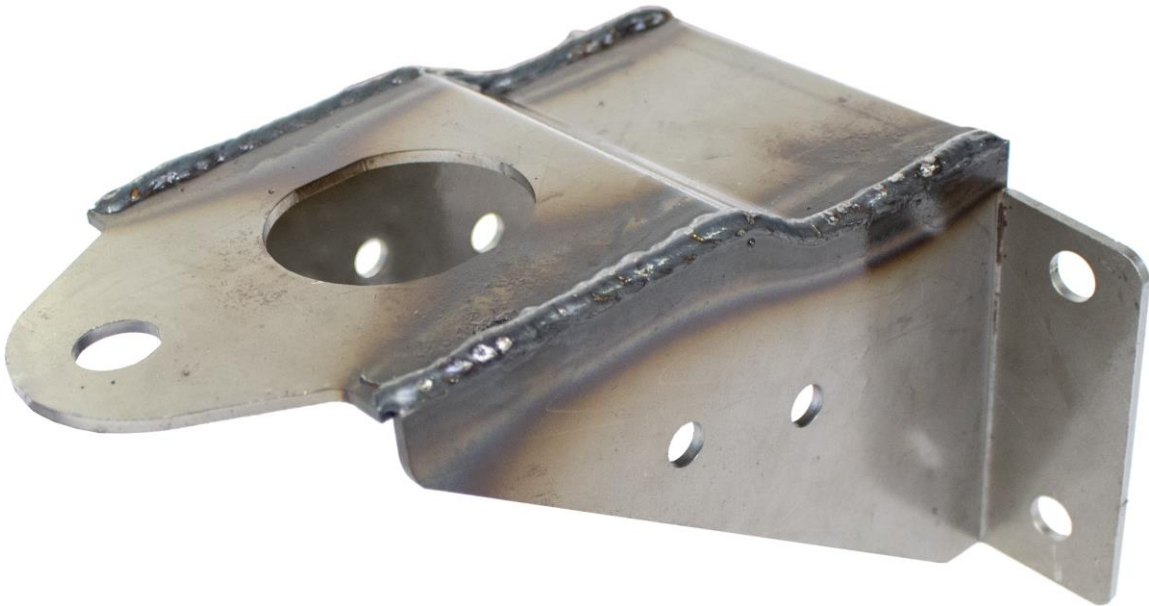




RUST BUSTER

RB7371
Rear Cab Mount
1981-1987 Chevy C10 / K10 – Standard Cab 8 ft. Bed



REQUIRED TOOLS

Jack Stands or Lift
Paint/Primer
Hand Grinder
Cutting Wheel or Torch
Ear & Eye Protection
Sockets & Ratchet
Fire Extinguisher
Wrench
Hammer

KIT CONTAINS

Rear Cab Mount
M10 Flanged Hex Screw
M10 Flange Locknut

QTY

1
6
6



RUST BUSTER

RB7371
Rear Cab Mount
1981-1987 Chevy C10 / K10 – Standard Cab 8 ft. Bed

1) **PREPARING YOUR VEHICLE**

Begin by disconnecting your battery prior to starting your installation.

Inspect your vehicle for leaking fuel lines, fuel tank and engine components. If you have fuel leaks repair all leaks prior to starting your installation. If your fuel tank is near your welding area **remove your tank prior to welding.**

Remove all combustible items above the work area such as seats, carpets, padding, etc.

Keep all flammable materials away from the vehicle work area.

2) **PREPARING YOUR WORKSTATION**

Keep a fire extinguisher close by in the case of fire and make sure you always have a designated “Fire Watch” to assist during the cutting or welding phases.

Abide by all apprenticed welding safety standards and practices.

Always use appropriate welding eye protection, ear protection, and work and fire safety gloves during the installation and within the work area.



WARNING!

If you are unsure on how to perform the installation or how to operate any of the required tools listed above, it is **HIGHLY** advised that you enlist the work of a certified welder/installer.

Failure to follow proper safety precautions and instructions may result in serious injury. **The user assumes all liability when installing the product.**



RUST BUSTER

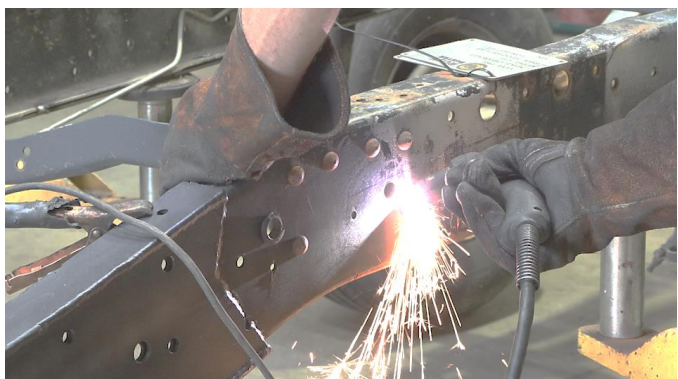
RB7371 Rear Cab Mount 1981-1987 Chevy C10 / K10 – Standard Cab 8 ft. Bed

3) PREPARING FOR YOUR INSTALL

Lift up your vehicle. Remove any lines or power harnesses from the work area. Remove your cab mounts bolt and bushing.

4) CUT

Cut out the existing rivets retaining your factory rear cab mount and remove your cab mount.



Grind the frame free of rust and debris, revealing bare metal.

5) INSTALL

Hold your replacement rear cab mount up to the frame and insert the included hardware to hold your part in place. Using a 14mm socket and 15mm wrench, tighten the bolts and nuts retaining your rear cab mount.



6) PAINT

Paint the part with primer or other rust inhibitor to help prevent or reduce the risk of rust formation.

We recommend our Rust Buster Rust Converter & Primer Spray Paint (RB9917).



7) REINSTALL

Reinstall your cab mounts bolt and bushing.