



RUST BUSTER

RB7367L
Leaf Spring Frame Section
1973-1987 Chevy C10 – Standard Cab 8 ft. Bed



REQUIRED TOOLS

Jack Stands or Lift
Mig Welder
Paint/Primer
Hand Grinder
Cutting Wheel or Torch
Welding Gloves
Welding Hood/Shield
Ear & Eye Protection
Sockets & Wrench
Fire Extinguisher
Wrench
C-Clamps
Hammer
Punch

KIT CONTAINS

Leaf Spring Frame Section
M10 Flanged Hex Screw
M10 Flange Locknut

QTY

1
8
8



RUST BUSTER

RB7367L Leaf Spring Frame Section 1973-1987 Chevy C10 – Standard Cab 8 ft. Bed

1) **PREPARING YOUR VEHICLE**

Begin by disconnecting your battery prior to starting your installation.

Inspect your vehicle for leaking fuel lines, fuel tank and engine components. If you have fuel leaks repair all leaks prior to starting your installation. If your fuel tank is near your welding area **remove your tank prior to welding.**

Remove all combustible items above the work area such as seats, carpets, padding, etc.

Keep all flammable materials away from the vehicle work area.

2) **PREPARING YOUR WORKSTATION**

Keep a fire extinguisher close by in the case of fire and make sure you always have a designated “Fire Watch” to assist during the cutting or welding phases.

Abide by all apprenticed welding safety standards and practices.

Always use appropriate welding eye protection, ear protection, and work and fire safety gloves during the installation and within the work area.



WARNING!

If you are unsure on how to perform the installation or how to operate any of the required tools listed above, it is **HIGHLY** advised that you enlist the work of a certified welder/installer.

Failure to follow proper safety precautions and instructions may result in serious injury. **The user assumes all liability when installing the product.**



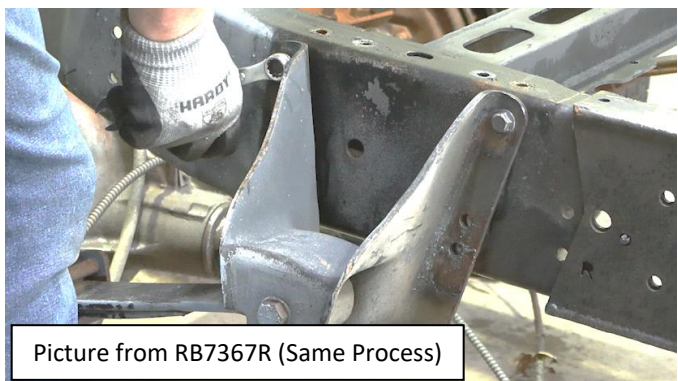
RUST BUSTER

RB7367L Leaf Spring Frame Section 1973-1987 Chevy C10 – Standard Cab 8 ft. Bed

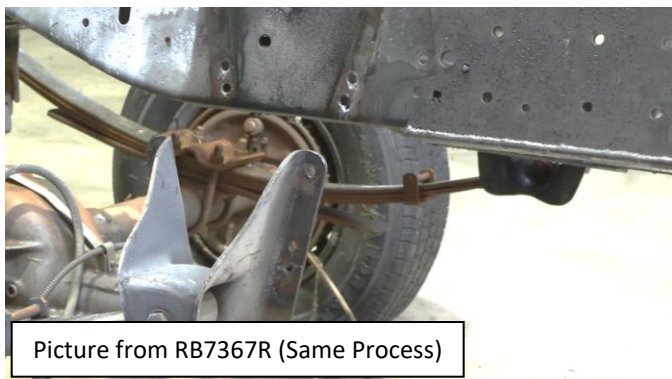
3) PREPARING FOR YOUR INSTALL

Lift up your vehicle. Remove any lines or power harnesses in your work area.

Using a 14mm socket and 15mm wrench, remove the bolts retaining the leaf spring hanger, parking brake cable bracket and center frame crossmember (if you have our part RB7363 or RB7375).



You may need to lift your vehicle in order to separate the hanger from the frame.

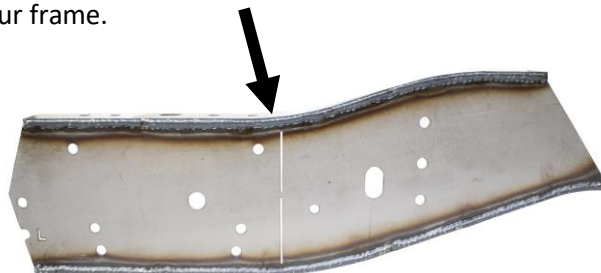


Grind the frame free of rust and debris, revealing bare metal.

Spray the work area with a weldable primer to help prevent against rust development.

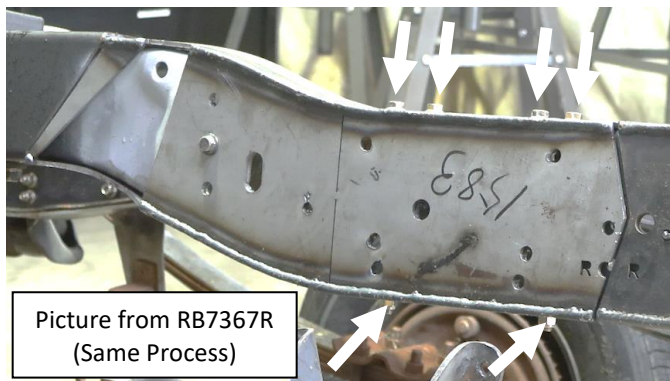
4) CUT

Due to the frame rail not being completely straight, our part features a perforation you can cut on your frame section that allows you to meet the bend on your frame.



Slide your leaf spring frame section onto the frame and tap it into place using the frame holes to help with the alignment.

If you installed our center frame crossmember (RB7363 or RB7375), use a 14mm socket and 15mm wrench to install the six bolts on the top and bottom of your frame rail to hold your crossmember and leaf spring frame section in place.



5) WELD

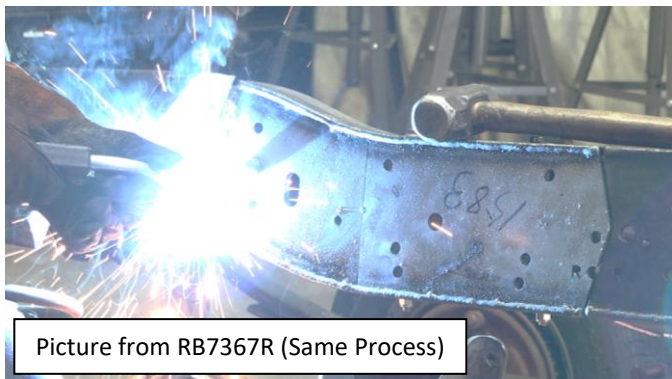
After screwing in the included hardware, c-clamp your part into place if needed.



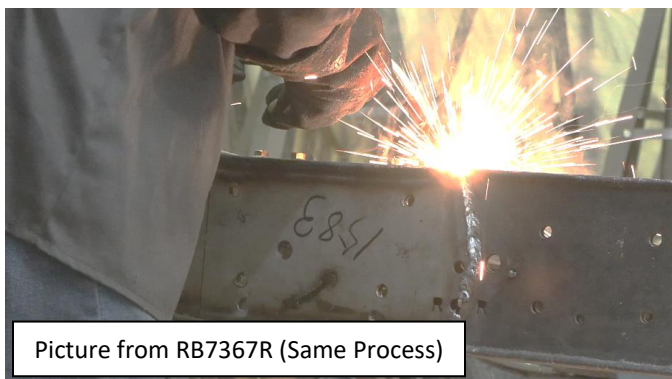
RUST BUSTER

RB7367L Leaf Spring Frame Section 1973-1987 Chevy C10 – Standard Cab 8 ft. Bed

Following proper welding procedures, tack weld your leaf spring frame section onto the frame. Then, weld the part on fully. Weld 100% around all edges.



Picture from RB7367R (Same Process)



Picture from RB7367R (Same Process)

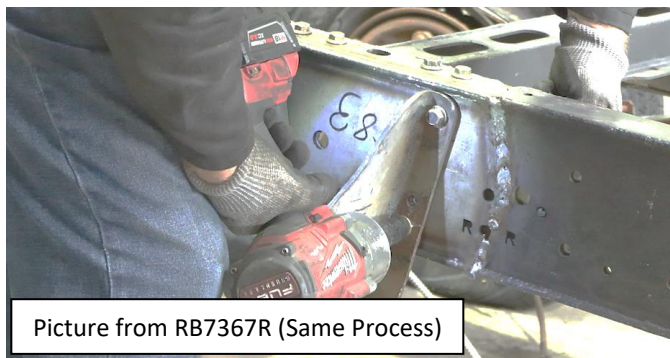
6) REINSTALL

Lower the frame back down and line the leaf spring hanger up with the holes on your frame rail.

Once in place, install the four included bolts and nuts on the top of your leaf spring hanger. You may need to insert a hole punch into one of the holes to help with the alignment.



Picture from RB7367R (Same Process)



Picture from RB7367R (Same Process)

Reinstall your parking brake cable bracket with a 14mm socket and 15mm wrench.

7) PAINT

Paint the part with primer or other rust inhibitor to help prevent or reduce the risk of rust formation.

We recommend our Rust Buster Rust Converter & Primer Spray Paint (RB9917).



Picture from RB7367R (Same Process)