



RUST BUSTER

RB73100 Center Frame Crossmember Lower Brackets 1973-1980 GM C/K-Trucks



REQUIRED TOOLS

Jack Stands or Lift
Paint/Primer
Cutting Wheel or Torch
Welding Gloves
Welding Hood/Shield
Ear & Eye Protection
Sockets & Wrench
Fire Extinguisher
Punch

KIT CONTAINS

Center Frame Crossmember Lower
Brackets
M10 30mm Flanged Hex Screw
M10 25mm Flanged Hex Screw
M10 Flange Locknut

QTY

1
8
8
16



RUST BUSTER

RB73100 Center Frame Crossmember Lower Brackets 1973-1980 GM C/K-Trucks

1) PREPARING YOUR VEHICLE

Begin by disconnecting your battery prior to starting your installation.

Inspect your vehicle for leaking fuel lines, fuel tank and engine components. If you have fuel leaks repair all leaks prior to starting your installation. If your fuel tank is near your welding area **remove your tank prior to welding.**

Remove all combustible items above the work area such as seats, carpets, padding, etc.

Keep all flammable materials away from the vehicle work area.

2) PREPARING YOUR WORKSTATION

Keep a fire extinguisher close by in the case of fire and make sure you always have a designated "Fire Watch" to assist during the cutting or welding phases.

Abide by all apprenticed welding safety standards and practices.

Always use appropriate welding eye protection, ear protection, and work and fire safety gloves during the installation and within the work area.



WARNING!

If you are unsure on how to perform the installation or how to operate any of the required tools listed above, it is **HIGHLY** advised that you enlist the work of a certified welder/installer.

Failure to follow proper safety precautions and instructions may result in serious injury. **The user assumes all liability when installing the product.**



RUST BUSTER

RB73100 Center Frame Crossmember Lower Brackets 1973-1980 GM C/K-Trucks

3) PREPARING FOR YOUR INSTALL

Lift up your vehicle. Remove or protect any fuel lines, brake lines, and wiring harnesses.

4) CUT

Begin by removing the bolts retaining your center frame crossmembers lower brackets using a 14mm socket and 15mm wrench.

If you are uninstalling the lower bracket from the factory crossmember, you will need to cut out the rivets on the top of your crossmember retaining the lower brackets. Punch out the rivets using a punch.



5) INSTALL

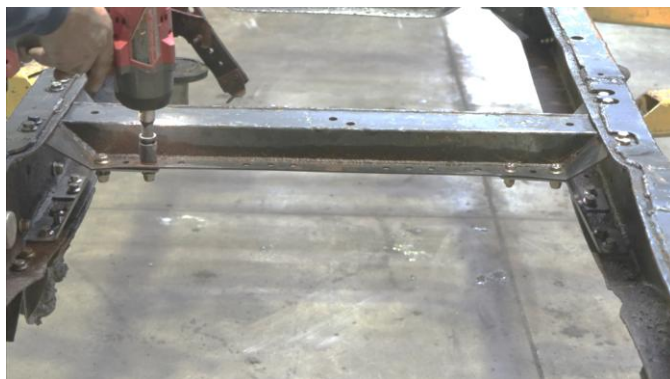
Take your replacement lower brackets and hold them in place where the factory brackets were originally located. Use the holes on your bracket to help with the alignment.

NOTE: These brackets are side specific.

Once you have your brackets in place, take the included hardware and screw them into place. There will be four on the top and four on the bottom of your bracket. You can use a punch to help with the alignment when installing your bolts.



After your bolts are screwed into place, use a 14mm socket and 15mm wrench to tighten your hardware.





RUST BUSTER

RB73100 Center Frame Crossmember Lower Brackets 1973-1980 GM C/K-Trucks

6) **PAINT**

Paint the part with primer or other rust inhibitor to help prevent or reduce the risk of rust formation.

We recommend our Rust Buster Rust Converter & Primer Spray Paint (RB9917).



7) **REINSTALL**

Reinstall your vehicles body.