



RUST BUSTER

RB7008 Cab Mount Crossmember 1997-2003 Ford F-150



REQUIRED TOOLS

Jack Stands or Lift
Paint/Primer
Hand Grinder
Cutting Wheel or Torch
Welding Gloves
Welding Hood/Shield
Ear & Eye Protection
Sockets & Wrench
Socket Extension
Fire Extinguisher
Punch
Brace
Hammer
Wrench

KIT CONTAINS

Center Frame Crossmember
Support Bracket
M10 Flanged Hex Screw
M10 Flange Locknut

QTY

1
2
20
20



RUST BUSTER

RB7008 Cab Mount Crossmember 1997-2003 Ford F-150

1) PREPARING YOUR VEHICLE

Begin by disconnecting your battery prior to starting your installation.

Inspect your vehicle for leaking fuel lines, fuel tank and engine components. If you have fuel leaks repair all leaks prior to starting your installation. If your fuel tank is near your welding area **remove your tank prior to welding.**

Remove all combustible items above the work area such as seats, carpets, padding, etc.

Keep all flammable materials away from the vehicle work area.

2) PREPARING YOUR WORKSTATION

Keep a fire extinguisher close by in the case of fire and make sure you always have a designated "Fire Watch" to assist during the cutting or welding phases.

Abide by all apprenticed welding safety standards and practices.

Always use appropriate welding eye protection, ear protection, and work and fire safety gloves during the installation and within the work area.



WARNING!

If you are unsure on how to perform the installation or how to operate any of the required tools listed above, it is **HIGHLY** advised that you enlist the work of a certified welder/installer.

Failure to follow proper safety precautions and instructions may result in serious injury. **The user assumes all liability when installing the product.**



RUST BUSTER

RB7008 Cab Mount Crossmember 1997-2003 Ford F-150

3) **PREPARING FOR YOUR INSTALL**

Lift up your vehicle. Remove any lines or power harnesses in your work area. Remove your cab mount crossmembers bolt and bushing.

4) **CUT**

Begin by removing the rivets located on the top and bottom of your frame rail retaining the factory cab mount crossmember. Punch out the rivets using a punch.



Grind the frame free of rust and debris, revealing bare metal.



Spray the work area with a weld-through primer to help prevent against rust development.





RUST BUSTER

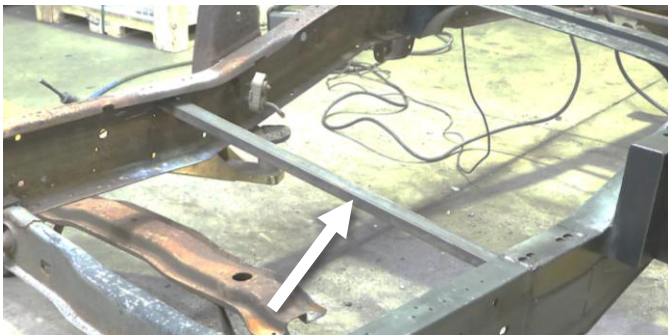
RB7008 Cab Mount Crossmember 1997-2003 Ford F-150

5) **INSTALL**

Hold your replacement cab mount crossmember up to the top of your frame rail making sure the holes align.



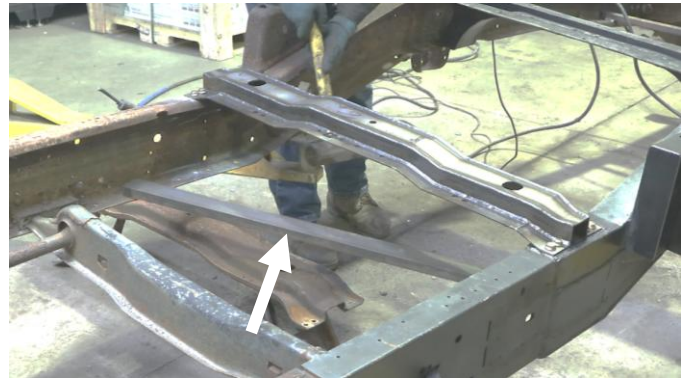
NOTE: You can insert a brace in between the frame to help with the alignment.



Once your crossmember is in place, take the 8 included screws and nuts and partially screw them into the top of your frame rail.



If you used a brace to space out the frame, remove it at this time.



Then, take your two support brackets and hold them up to the underside of your frame, lining up the holes with your crossmember. Once you have the holes aligned, screw in the twelve remaining screws and nuts.





RUST BUSTER

RB7008 Cab Mount Crossmember 1997-2003 Ford F-150

NOTE: You can use a punch to help with the alignment.



Once you have all of your hardware screwed into place, tighten your hardware with a 15mm socket and wrench.



6) PAINT

Paint the part with primer or other rust inhibitor to help prevent or reduce the risk of rust formation.

We recommend our Rust Buster Rust Converter & Primer Spray Paint (RB9917).



7) REINSTALL

Reinstall your cab mount crossmembers bolt and bushing.